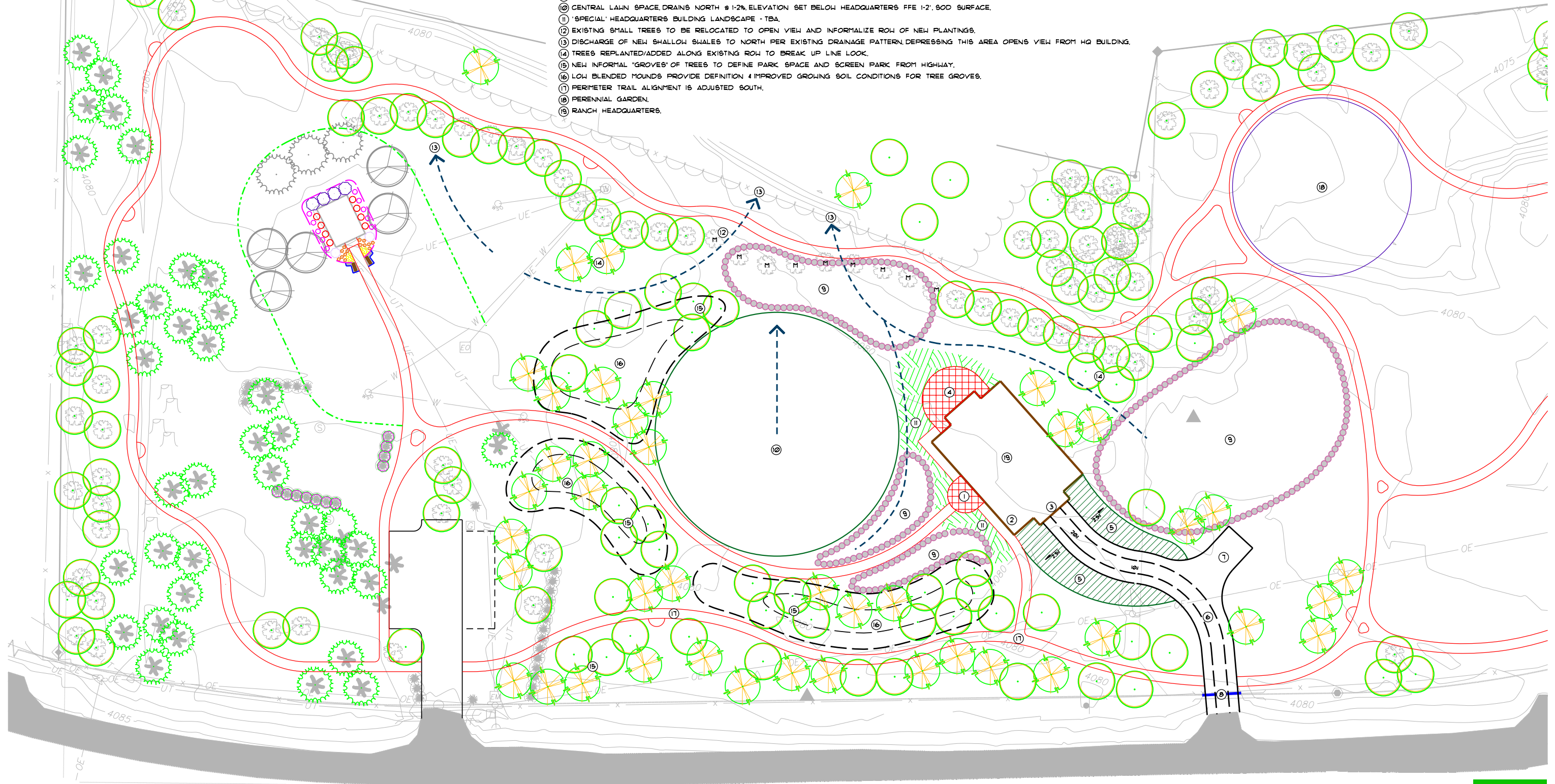
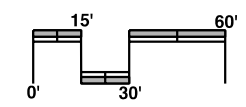


LEGEND:

- ① RANCH HEADQUARTERS BUILDING MAIN ENTRY.
- ② RESTROOMS ENTRY.
- ③ "HAYLOFT" ELEVATED ENTRY FFE 1'-8".
- ④ BUILDING FRONT OUTDOOR SPACE, MATERIALS REFLECT MAIN ENTRY.
- ⑤ RAISED RAMP TO "HAYLOFT" ENTRY, SIDE SLOPES 2.5%, RAMP 10% TO 20%.
- ⑥ "TWO TRACK" TO LOFT ENTRY FOR MECHANICAL EQUIPMENT SERVICE.
- ⑦ K TURN AREA.
- ⑧ NEW GATE IN FENCE.
- ⑨ RECLAIM CONSTRUCTION STAGING AREA AS WILDFLOWER MEADOW.
- ⑩ CENTRAL LAWN SPACE, DRAINS NORTH @ 1-2%, ELEVATION SET BELOW HEADQUARTERS FFE 1'-2", SOD SURFACE.
- ⑪ "SPECIAL" HEADQUARTERS BUILDING LANDSCAPE - TBA.
- ⑫ EXISTING SMALL TREES TO BE RELOCATED TO OPEN VIEW AND INFORMALIZE ROW OF NEW PLANTINGS.
- ⑬ DISCHARGE OF NEW SHALLOW SWALES TO NORTH PER EXISTING DRAINAGE PATTERN, DEPRESSING THIS AREA OPENS VIEW FROM HQ BUILDING.
- ⑭ TREES REPLANTED/ADDED ALONG EXISTING ROW TO BREAK UP LINE LOOK.
- ⑮ NEW INFORMAL "GROVES" OF TREES TO DEFINE PARK SPACE AND SCREEN PARK FROM HIGHWAY.
- ⑯ LOW BLENDED MOUNDS PROVIDE DEFINITION & IMPROVED GROWING SOIL CONDITIONS FOR TREE GROVES.
- ⑰ PERIMETER TRAIL ALIGNMENT IS ADJUSTED SOUTH.
- ⑱ PERENNIAL GARDEN.
- ⑲ RANCH HEADQUARTERS.



Ucross Park
SITE DEVELOPMENT CONCEPT - September 12, 2011



CARL THUESEN
 A S I A
 ECO COURSE ARCHITECTURE
 LANDSCAPE ARCHITECTURE
 1357 GRAND AVE. SUITE 105
 P.O. BOX 22943
 BILLINGS, MT 59104
 406/232-8343 FAX 232-9853